



Reaching More People. Touching More Lives.

2019 REPORT TO THE COMMUNITY



Reaching More People. Touching More Lives.



One of the great joys of being a part of Executive Service Corps of Southern California is hearing from our clients . . . hearing how their organizations have evolved because of the work we do . . . how these nonprofits are growing, meeting the needs of more people, and changing the lives of those who depend on their services every day.

We are also inspired by the opportunity to work with our generous supporters and volunteers, who invest in ESC in countless ways. Your commitment, time and dollars contribute enormously to our ability to make a difference, and you are alongside us with every step forward. Your excitement is infectious, and motivates us all to work even harder to make a deep and lasting impact in the community.



We are incredibly grateful to all of you who make our work possible. Thanks to you, ESC is reaching more people — and touching more lives — every day, every year. We look forward to continuing this journey together.



David Factor, *President and CEO*



Scott J. Weiner, *2019 Chair*



Our Mission:

To empower nonprofits to achieve their missions through affordable coaching and consulting by trained executive-level volunteers.

Our Vision:

Successful nonprofits making our community an extraordinary place in which all can thrive.

Executive
Directors
Leadership
Institute

It Takes a Village to Make a Leader

From managing organizational politics, to cultivating new business relationships, to responding to the Idyllwild brush fire — Fatima Djelmane Rodriguez, Executive Director of Camp Ronald McDonald for Good Times, was supported in facing challenges and came away inspired as a participant in ESC's 2018 Executive Directors Leadership Institute (EDLI).



“We Executive Directors often don’t have enough resources to do the work that we do, so this investment from ESC and all the donors and funders who make EDLI possible is so important for nonprofit leaders. Great things aren’t accomplished on our own. We need a village to do that, and EDLI was definitely a critical part of my village.”

**—Fatima Djelmane Rodriguez,
Executive Director, Camp Ronald McDonald for Good Times**

Read more about Fatima’s growth as a leader:

escsc.org/clients/campronald.



BOARD OF DIRECTORS

William R. Barrett, Jr.
Danielle Benoit
Bradford J. Ebnor
Irwin S. Field
William Flumenbaum
Michael J. Goldberg
Abner D. Goldstine *Treasurer and
Vice President of Finance*
Kate Ides
Irwin J. Jaeger
Eric L. Moore
Lizbeth G. Nevarez
Denise J. Raytis *Secretary*
Robert F. Scouler
Laura L. Survant
Daryl T. Twerdahl
Scott J. Weiner *Chair*
David J. Zuercher *Vice Chair*

Ex Officio

David Factor *President and CEO*
Mary Trigg *Chair, Consultants
Advisory Council*

STAFF

David Factor *President and CEO*
Susan Afriat *Training Manager*
Marissa Belau *Operations Manager*
Allison Celosia *Development
and Communications Manager*
Julia Fischer *Director of
Organizational Consulting*
Vicky Foxworth *Vice President of
Organizational Consulting*
Lilly Hogle *Organizational
Consulting Coordinator*
Sandy James *Operations Associate*
Meghan Maloney *Volunteer
and Programs Manager*
Larry McCormick *Bookkeeper*
Janet McIntyre *Vice President of Programs
and Training*
Felicity Palmer *Director of Development
and Communications*
Gretchen Schulz *Operations Assistant*

Customized
Leadership
Cohort


Connecting Leaders Through Philanthropy with the J.B. and Emily Van Nuys Charities

Inspired to connect more deeply with its grantees, the J.B. and Emily Van Nuys Charities worked with ESC to create a customized leadership cohort to empower leaders of local domestic violence prevention agencies.

“Partnering with ESC has been a great opportunity for our board. What a journey it has been to focus our grant dollars and provide a strong network and community for our agency partners!”

—Terry Dibble, President, J.B. and Emily Van Nuys Charities

Read more about this innovative collaborative project:
escsc.org/clients/vnc.

 Meghan Maloney, Volunteer and Programs Manager, ESC; Terry Dibble, President, J.B. and Emily Van Nuys Charities; Danielle Benoit, Board Member, ESC, and Business Performance Advisor, Insperty.

THANK YOU TO OUR

Generous Supporters!

2018 FOUNDATION AND CORPORATE SUPPORTERS

Champion Sponsor (\$100,000 and above)
California Community Foundation

Premier Sponsors (\$50,000 – \$99,999)
The Rose Hills Foundation
Wells Fargo Foundation

Sponsors (\$25,000 – \$49,999)
Diane and Guilford Glazer Philanthropies
George Hoag Family Foundation
The Jewish Federation of
Greater Los Angeles*
Payden & Rygel
J.B. and Emily Van Nuys Charities*

Partners (\$15,000 – \$24,999)
The Capital Group Companies Charitable
Foundation
Southern California Edison
Dan Murphy Foundation
Resnick Foundation
Sunair Children's Foundation

Supporters (\$5,000 – \$9,999)
City National Bank
Doris Factor Endowment Fund of the Jewish
Community Foundation of Los Angeles
John Gogian Family Foundation
MUFJ Union Bank Foundation
Pacific Life Foundation

Contributors (\$1,000 – \$4,999)
Green Hasson Janks
Seeley W. Mudd Foundation
O'Melveny & Myers
The Seaver Institute

*Collaborative Partners

The Heart of ESC: Our Volunteers



In 2018, our consultants **volunteered more than 11,500 hours** to help nonprofits grow and deepen their impact.

Our corps now numbers **more than 110**, with executives coming from backgrounds in the nonprofit sector, healthcare, government, law, finance, higher education, and entertainment, among others.

Increasingly — and intentionally — our consultant corps reflects the **incredible diversity** of our region, with even greater representation from people of color, Spanish speakers, and members of the LGBTQ community.

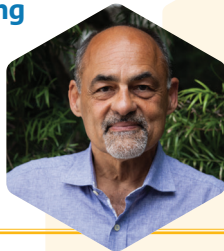
Inspired by Public Service: ESC Consultant Agapito Diaz

After 40 years of working in city government and nonprofits, Agapito Diaz began volunteering with ESC to stay deeply connected to the community's biggest social issues.

“Here at ESC, you are at this unique intersection of public service and volunteerism, where you are helping nonprofits do their jobs better for greater impact.”

—Agapito Diaz, ESC consultant since 2010

Read more about Agapito's consultant journey:
escsc.org/featured-consultants/agapito.



2018 INDIVIDUALS

Visionaries (\$10,000 and above)

Ben Breslauer and the Samuel
and Helene Soref Foundation
Irwin S. Field
Abner D. and Roslyn Goldstine
Joan Payden
Diana L. Walker
Scott J. Weiner
David J. Zuercher

Leaders (\$3,000 – \$9,999)

William Burnside
Elizabeth Burnside
William Flumenbaum
Michael J. Goldberg
John and Jamie Krakowski
R. Alan Lavery
Denise J. Raytis
Robert F. Scoular

Ambassadors (\$1,000 – \$2,999)

Albert Algaze
William R. Barrett, Jr.
Margaret Black
Bradford J. Ebner
Lorraine and Jerry Factor
Ruth Feiler
Beverly Froelich
Tim Kittleson
Susan Leonard
Chuck Lindahl
Al Linton
Lizbeth G. Nevarez
John Power
Harris Sperling
Jill Spuehler
Laura L. Survant
Ron Vinje

2018
Volunteer
Recognition
Luncheon

Honoring our Extraordinary Consultants and Nonprofit Leaders



ESC celebrated our annual Volunteer Recognition Luncheon in November 2018. Thank you to our sponsors Green Hasson Janks and MUFG Union Bank Foundation for being part of this inspiring event!

“ESC is an incredible group of nonprofit leaders and volunteers. It’s really a gift to belong to an organization that is so hopeful for the future of our community.”

**—Roberta Suber,
2018 Frank Feiler Distinguished Service Award Honoree**



⊖ Top photo: 2018 ESC consultant honorees: Agapito Diaz, Leslie Horowitz, Roberta Suber, Lad Lorenz.
Bottom photo: Amy Friedman, Executive Director, POPS the Club, 2018 Megan G. Cooper Leadership Award honoree with David Factor, President and CEO, ESC.

2018 INDIVIDUALS (CONT.)

Advocates (\$500 – \$999)

- Susan Barton
- Karen Buxbaum
- John Coleman
- Holly and David Factor
- Mark Friedman
- Leslie Horowitz
- Lad Lorenz
- Jake Rohrer
- Nancy Sacks
- Roberta Suber
- Daryl T. Twerdahl
- Jerry Weissman and Judith Farber-Weissman

Allies (\$250 – \$499)

- Judy Bain
- Danielle Benoit
- Jim Bright and Lucy Farber
- Bennett Brown
- Linda Camras
- Megan Cooper
- Richard Fass
- Vicky Foxworth
- Peter Koplík
- Michael Linsk
- Brenda Lynch
- Mike Marshall
- Felicity Palmer
- Fred Samulon
- Janet Schulman
- Jorge Sciapac
- Steven Solton
- Richard Thaler
- Richard Tom and Peggy Lennon
- Mary Trigg
- Sally Vasen Alter
- Kathy Walsh
- Tim Winchell
- Barbara Yaroslavsky



Strategic
Planning

A Compassionate Community Looks to the Future

Michele Prince, CEO of OUR HOUSE Grief Support Center, worked with a team of ESC consultants and her board and staff on a dynamic strategic planning project focused on sustainability.

“ESC helped us tap into our greatest resource — our passionate and compassionate community — and empowered us to build the scaffolding we needed to strengthen and grow our agency. Thank you to ESC’s own community of supporters for creating this essential opportunity for OUR HOUSE to sustain our mission.”

—Michele Prince,
CEO, OUR HOUSE Grief Support Center

Read more about OUR HOUSE's vision for the future:
escsc.org/clients/ourhouse.



2018 INDIVIDUALS (CONT.)

Friends (Up to \$249)

Susan Afriat
Barbara Arnold and Paul Turley
Marissa Belau
Michael Bridge
Anne Bunney
Allison Celosia
Selina Chi
Scott Choate
Rachel Davenport
Eric DeWeese
Agapito Diaz
Jim and Roxie Esterle
Mona Field
Julia Fischer
Gwen Flynn
Jeff Henderson
Michael Hirschfeld
Clive Hoffman
Lilly Hogle
Sandy James
Steven Lavine
Meghan Maloney
Janet McIntyre
Lynn Dines and Asbjorn Melo
Georgia Mercer
Judy Milestone
Eric Moore
Francine Moskowitz
Theresa Murphy
Polly Nelson
Bea Nemlaha
Michele Proctor
Madonna Shannon
Diane Siegfried
Sharon Spira-Cushnir
Barry Steinberg
Sandy Tauber-Rosen
Gene Tuch
Lauree Weaver
Lois Weinsaft
Beverly Weise
Phil Young

Touching More Lives Through Service

CONSULTING SERVICES

Strategic Planning

Board Development

Leadership Coaching

Fund Development

Customized Consulting

**Our
Services**

INSTITUTES AND PROGRAMS

Executive
Directors Leadership
Institute (EDLI)

Developing
Development
Program (DDP)

Customized
Leadership
Cohort Programs

In 2018, ESC served **136 clients**
on **180 projects.**

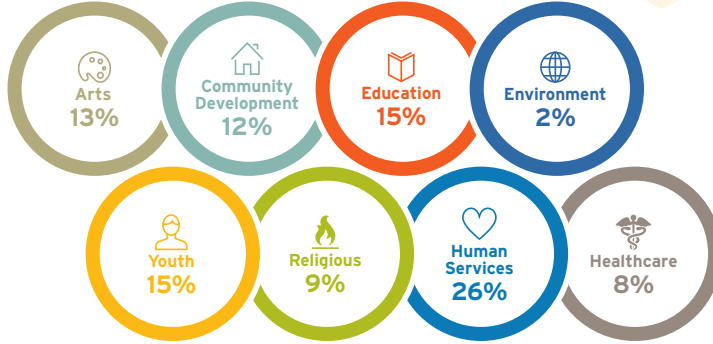
THANK YOU TO OUR **Volunteer Consultants!**

Susan Afriat
Albert Algaze
Barbara Arnold
David Arvonio
Marshal Backlar
Heather Backstrom
Judy Bain
Bonnie Barnes
Susan Barton
Natalia Baudin
Margaret Black
David Blenko
David Braunstein
Benjamin Breslauer
Michael Bridge
Jim Bright
Karen Buxbaum
Linda Camras
Betsy Cheek
Selina Chi
Scott Choate
John Coleman
Derek D'Sa
Rachel Davenport
Phil Davis
Eric DeWeese
Agapito Diaz*
Lynn Dines
Gail Doi

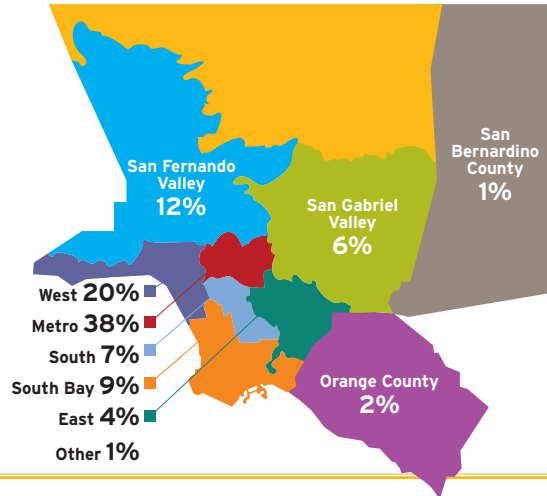
**Serves on Consultants
Advisory Council*



CLIENTS BY MISSION



CLIENTS BY REGION



VOLUNTEER CONSULTANTS (CONT.)

- Jim Esterle
- Roxie Esterle
- Richard Fass
- Sammy Feuerlicht
- Mona Field
- Dick Fishman
- Susan Flaming
- Gwen Flynn
- Michele Foster
- Mark Friedman
- Beverly Froelich
- Gabriel Garciamendez
- Pat Garner
- Dan Goodstein
- Thyonne Gordon
- Micah Greenberg
- Stephen Gutwillig
- Jeff Henderson*
- Michael Hirschfeld
- Clive Hoffman
- Leslie Horowitz
- Alma Johnson-Hawkins
- Dale A. Johnston
- Cathy Kaiser
- Mika Kim
- Craig Kinzer
- Tim Kittleson
- Bert Kleinman
- Susan Kobilarcsik
- Yu-Lin Kong
- Peter Koplik
- Devra Korwin
- John Krakowski
- Marty Lasker

*Serves on Consultants Advisory Council

Clients Served in 2018

The Achievable Foundation
Adat Shalom
Alliance of Women Directors
American Youth Soccer
Organization (AYSO)
American Youth Symphony
Angel City Chorale
Anthesis
Antioch University
Bridge Program
The Arc Los Angeles
& Orange Counties
Arts for Incarcerated
Youth Network
Bresee Foundation
The California Endowment
Caltech Y
Camp Ronald McDonald
for Good Times
CASA of Los Angeles
Catholic Association
of Latino Leaders
The Center at Blessed Sacrament
Center for Council
Center for Strategic Public-
Private Partnerships
Center for the Pacific
Asian Family
Centinela Youth Services, Inc.
Chai Village LA
Charles R. Drew University
of Medicine and Science
Circle of Friends
City Plans
Coalition of Orange County
Community Health Centers
Community Corporation
of Santa Monica
Community Partners
Dominican Sisters
of Mission San Jose
Downtown Women's Center

East Los Angeles Women's Center
Education Through Music - LA
Elemental Music
EmpowHer Institute
EntreNous Youth
Empowerment Services, Inc.
Executive Service Corps
of the Triangle
EXP
Facing History and Ourselves
Glendale Arts
Grand Vision Foundation
GrowGood Farm
Harbor Community Clinic
HEAR Center
Heart of Los Angeles, Inc. (HOLA)
Instituto de Educación Popular
del Sur de California (IDEPSCA)
Immaculate Heart Community
Institute for Public Strategies
Invertigo Dance Theatre
Jenesse Center, Inc.
Jewish Free Loan Association
Jewish World Watch
Karsh Center
of Wilshire Boulevard Temple
Kehillat Israel
Reconstructionist Congregation
Kids' Community Dental Clinic
Korean American Family Services
Kheir Center
L.A. Trust for Children's Health
LAPD Hollenbeck
Police Activities League
Los Alamitos Youth Center, Inc.
Los Angeles Conservation Corps
Los Angeles County
Bicycle Coalition
Los Angeles Homeless
Services Authority
Los Angeles Museum
of the Holocaust

Los Angeles Nomadic Division
Lung Cancer Foundation
of America
The Miracle Project
MOSTe
MY HERO Project
Netiya
New Directions for Veterans
NewGround: A Muslim-Jewish
Partnership for Change
North County Immigration
and Citizenship Center
Odyssey Charter School
ONEgeneration
Otis College of Art and Design
Our Children LA
OUR HOUSE Grief Support Center
Outfest
Partners for Pediatric Vision
PATH Ventures
Pathways LA
Peace Over Violence
Personal Assistance Services
Council of Los Angeles County
Phillips Graduate University
Pieter Performance Space
PLUS ME Project
POPS the Club
The Promises Foundation
PUENTE Learning Center
The Rabbinical Assembly
Rainbow Services
Reading Partners
Resurrection Catholic School
Richstone Family Center
The Riordan Programs
Rising TIDE @ MKEC
Salesian Boys and Girls Club
Santa Monica Travel & Tourism
The Shakespeare Center of LA
SHARE!
Shoes That Fit
South Central Family
Health Center

Southern California Grantmakers
SPIRITT Family Services
St. Barnabas Senior Services
St. Francis Center
St. Louise Resource Services
St. Mary's Academy
St. Patrick Catholic School
St. Vincent Meals on Wheels
Stepping Forward LA
Strength United
Su Casa - Ending
Domestic Violence
Sustainable Works
Swipe Out Hunger
Switzer Learning Center
Synergy Academies
Taking the Reins
Temple Beth Hillel
Temple Beth Torah
Temple Emanuel of Beverly Hills
Temple Israel of Hollywood
Temple Judea
Temple Ramat Zion
Union Station Homeless Services
UMMA Community Clinic
Urban Community Outreach
Urban Peace Institute
Valley Beth Shalom
Viver Brasil Dance Company
The Walker Johnson
and Nasia Legacy Foundation
A Window Between Worlds
Women's Reproductive
Rights Assistance Project
Youth Mentoring Connection
Youth Speak Collective
YWCA Glendale

Collaborative Partners in 2018

Jewish Federation
of Greater Los Angeles
UniHealth Foundation
J.B. and Emily Van Nuys Charities

VOLUNTEER CONSULTANTS (CONT.)

R. Alan Lavery*
Steven Lavine
George Leftwich
Peggy Lennon
Hugh Leonard
Susan Leonard*
Liz Leung
Chuck Lindahl
Michael Linsk
Al Linton
Brigette Loden
Lad Lorenz
Brenda Lynch
Mike Marshall*
Renée McCartney
Karen McCarthey
Ann McMullan
Asbjorn Melo
Georgia Mercer
Judy Milestone
Francine Moskowitz
Theresa Murphy
Alma Myers
Scott Nave
Polly Nelson
Bea Nemlaha
Howard Parmet*
Teri Paul
Yvette Reiner
Yesmean Rihbany
Jake Rohrer
Nancy Sacks
Fred Samulon
Karen Schneider

**Serves on Consultants
Advisory Council*

Audited Financials

Statement of Financial Position December 31, 2018

Assets

Current assets	
Cash and cash equivalents	\$482,773
Accounts receivable	148,875
Prepaid expenses	19,307
Pledges receivable	58,833
Total current assets	<u>709,788</u>
Noncurrent assets	
Investments	943,241
Property and equipment, net	24,313
Total noncurrent assets	<u>967,454</u>
Total assets	<u>\$1,677,242</u>

Liabilities and net assets

Current liabilities	
Accounts payable and other accrued expenses	\$37,520
Deferred revenue	155,096
Total current liabilities	<u>192,616</u>

Net assets

Undesignated	\$120,161
Board-designated quasi-endowment	611,017
Net assets without donor restrictions	731,178
Purpose and time restricted	263,025
Donor-restricted endowment	490,423
Net assets with donor restrictions	<u>753,448</u>
Total net assets	<u>1,484,626</u>

Total liabilities and net assets **\$1,677,242**

Statement of Activities For the Year Ended December 31, 2018

Revenues, gains and other support

Contributions and grants	\$699,217
Project fees	363,640
In-kind contributions	2,608,988
Interest and dividend income	84,116
Total revenue, gains and other support	<u>3,755,961</u>

Functional expenses

Program services	3,375,805
Management and general	272,611
Fundraising	168,708
Total functional expenses	<u>3,817,124</u>

Other change in net assets

Net realized and unrealized gain (loss) on investments	(116,432)
Change in net assets	(177,595)
Net assets December 31, 2017	1,662,221
Net assets December 31, 2018	<u>\$1,484,626</u>

Complete audited financial statements are available from the offices of ESC.

VOLUNTEER CONSULTANTS (CONT.)

Janet Schulman
 Jorge Sciupac
 Cliff Scott
 Madonna Shannon
 Amy Shapiro
 Diane Siegfried
 Marlene Singer
 Carol Smith
 Harris Sperling
 Jill Spuehler
 Barry Steinberg
 Mark Strunin
 Roberta Suber*
 Ethel Taft
 Mel Takata
 Ricardo Tejada
 Richard Thaler
 Dave Tillipman
 Richard Tom
 Mary Trigg*
 Gene Tuch
 Michael VanBruaene
 Sally Vasen Alter
 Ron Vinje
 Linda Wah
 Eileen Walker
 Lauree Weaver
 Lois Weinsaft
 Beverly Weise
 Jerry Weissman
 Tim Winchell
 Tena Yatroussis
 Phil Young
 Jim Zimring

*Serves on Consultants
Advisory Council